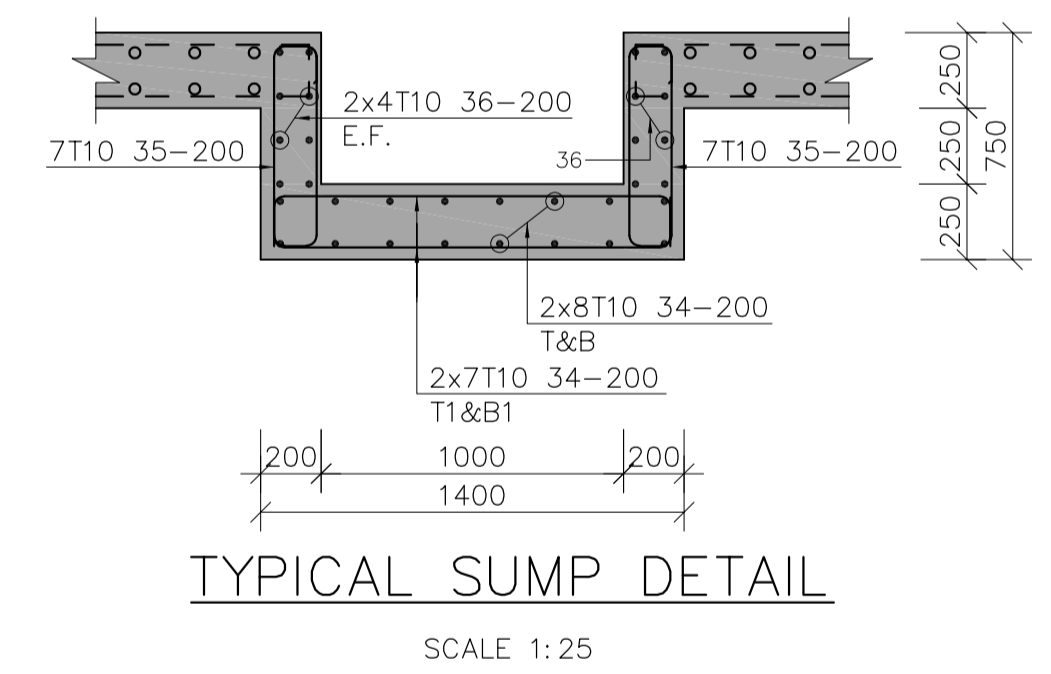


4500m³ TANK BOTTOM SLAB-LAYOUT & R.C. DETAILS(250mm THICK)

SCALE 1:100




TYPICAL SUMP DETAIL


SCALE 1:25

- NOTES:**
- DESIGN CRITERIA:**
 - DESIGN CODES B.S. 8007 & B.S. 8110
 - CONCRETE:**
 - CEMENT TO BE ORDINARY PORTLAND CEMENT TO B.S. 12
 - CONCRETE AGGREGATE TO COMPLY WITH B.S. 882
 - WATER IN CONCRETE MIXES TO B.S. 3148
 - CONCRETE CLASSES TO BE AS FOLLOWS:-
MASS CONCRETE FILL AND BLINDING MIX, CLASS 15/40
REINFORCED CONCRETE, CLASS 30/20
 - MINIMUM COVER TO ALL REINFORCEMENT TO BE 40mm UNLESS AS SPECIFIED BELOW FOR BUILDINGS:
MEMBERS OF BUILDINGS:
- SLABS - 20 mm
- BEAMS - 25 mm
- COLUMNS - 40 mm
- FOUNDATIONS & FOOTINGS - 50 mm
 - WALLS/COLUMNS SHOULD BE POURED, IF POSSIBLE, IN A FULL HEIGHT POUR AS SOON AS POSSIBLE AFTER THE BASE HAS BEEN CONCRETED (2 TO 3 DAYS)
 - REINFORCEMENT:**
 - REINFORCEMENT TO BE HIGH YIELD SQUARE TWISTED BARS TO B.S. 4469
 - BENDING DIMENSIONS TO B.S. 4466
 - THE CONTRACTOR IS RESPONSIBLE FOR PROVIDING ALL SPACER BLOCKS, CHAIRS AND TYING WIRE
 - EXAMPLE: 16 T12 - 07 - 150 SIGNIFIES 16 No. HIGH TENSILE 12mm DIA. BARS IDENTIFICATION MARK 07 AT 150mm CENTRE TO CENTRE SPACING
 - JOINTS:**

THE POSITION AND NUMBER OF INTERMEDIATE JOINTS TO BE AS DIRECTED BY THE ENGINEER OR AS SHOWN IN THE DRAWINGS. BEFORE PLACING FRESH CONCRETE THE OLD SURFACE SHALL BE ROUGHENED AND ALL LAITANCE AND LOOSE MATERIAL REMOVED. THE SURFACE SHALL BE THOROUGHLY WETTED BUT EXCESS WATER SHOULD BE REMOVED SO THAT THE CONSTRUCTION JOINTS ARE IN A SATURATED BUT SURFACE DRY CONDITION. ALL WALL/COLUMN BASE CONNECTIONS SHOULD HAVE 100mm KICKER UNLESS OTHERWISE SPECIFIED. THE UPVC WATER STOP SHALL BE 240mm WIDE UNLESS OTHERWISE SPECIFIED. JOINT FILLER TO B.S. 5292 AND TO BE APPROVED BY THE ENGINEER
 - ABBREVIATIONS:**

| | |
|--------------------------|-----------------|
| T - TOP | B - BOTTOM |
| N.F. - NEAR FACE | F.F. - FAR FACE |
| E.F. - EACH FACE | E.W. - EACH WAY |
| E.J. - EXPANSION JOINT | |
| C.J. - CONTRACTION JOINT | |
 - THIS DRAWING TO BE READ IN CONJUNCTION WITH DRAWING Nos. OYG-S-D-060 TO OYG-S-D-062

EMPLOYER

GOVERNMENT OF KENYA
 MINISTRY OF WATER SANITATION & IRRIGATION
 NAIROBI-KENYA

IMPLEMENTING AGENCY

MINISTRY OF WATER, SANITATION & IRRIGATION
 P.O Box 49720-00100
 Nairobi, Kenya

PROJECT
 PROPOSED CONSTRUCTION OF NYAMANJI IRRIGATION;
 PROJECT SUBA NORTH SUB COUNTY,
 HOMABAY COUNTY

Drawing Title:
 4500 CUBIC METRE TANK
 BOTTOM SLAB R.C. DETAILS

| | | | |
|----------|------------|-----------|-----------------------|
| DESIGNED | C.W & A.A | JAN. 2025 | SHEET: 2 of 3 |
| CHECKED | ENG. B.O.O | JAN. 2025 | SCALE: AS SHOWN |
| APPROVED | ENG. B.O.O | JAN. 2025 | |
| | | | M.W.S.&I 002-NY-WP |